

# *Creating Hope: Changing Lives*

Catholic Charities New Hampshire | 2018 Annual Report



 CATHOLIC  
CHARITIES  
NEW HAMPSHIRE  
*Moving Lives Forward*



Dear friends,

*“Finally, all of you, be of one mind, sympathetic, loving toward one another, compassionate, humble.” 1 Peter 3:8*

Christ-like love manifests itself in many ways. It is demonstrated by the generosity of our community, to assist those living in the throes of poverty and steps away from incredible despair. And that love is reflected in this year’s Catholic Charities New Hampshire Annual Report, “Creating Hope: Changing Lives.”

Unimagined in these pages you’ll get a glimpse into the world of Josiah, a young boy at St. Charles School, who finds a life-changing bond with an unusual friend. You’ll also hear of the challenges of Kalila, a single mom struggling to make ends meet. She could easily have given up, but with guidance and encouragement, the future is bright for her and her daughter.

Catholic Charities New Hampshire has been providing hope and dignity through compassionate and caring services since 1945, but none of this would be possible without your generous support. Thank you for all you do in service to our Lord and His people here in New Hampshire. You truly are changing lives.

Sincerely yours in Christ,

Most Reverend Peter A. Libasci  
Bishop of Manchester



## Catholic Charities NH

### Vision

We envision a future where vulnerable people are protected and supported, family life and marriage are preserved and strengthened and all are cared for with compassion and respect. We strive to provide person-centered services to strengthen New Hampshire families and build independence.

### Mission

Grounded in the life and ministry of Jesus Christ, Catholic Charities New Hampshire responds to those in need with programs that heal, comfort and empower.

### Values

Integrity

Respect

Compassion

Collaboration



Dear Friends,

Relationships. It's all about relationships - with Abba, Father, with our clients, and with people - like **you**. Each relationship is and has been critical to our success. The stories in this year's Annual Report are the direct result of what you have made possible over the past year: a special-needs student's heart-warming transformation through pet therapy and a clear pathway forward that a client found through a Life Plan and financial fitness.

As an organization, especially a Christian one, we are continually called to adapt and reevaluate how we respond to the needs of those we serve. Over the past year, we've been moving to an intensive case management model as the core of all of our services. This is complemented by emergency assistance and the development of client Life Plans, with goals that focus on the social determinants of health and explore various pathways out of poverty. Our aim is to guide clients toward successful outcomes and provide - sometimes for the first time in their lives - a sustainable path toward independence. Some are even achieving success at a level where they are now giving back! It's been wonderful to see some of our work come full circle.

All because of **YOU**.

As you peruse this year's report, I hope you're able to get a sense of your gifts at work. You are honoring the life and dignity of every vulnerable individual who appears at our door. Your investment and partnership allows us to build, establish and maintain essential relationships, where, every year, we reach 1-in-12 individuals - statewide - who struggle to get by, day after day. You allow Catholic Charities New Hampshire to fulfill its mission while playing a significant role in the economic, emotional and spiritual health of the communities we serve, and for that, I am grateful.

On behalf of those we serve, thank you for continuing to help us move lives forward!

God bless,

A handwritten signature in black ink that reads "Thomas Blonski". The signature is written in a cursive, flowing style.

Thomas Blonski  
President & CEO

*"I thank my God... always in every prayer of mine for you all. It is right for me to feel this way about you, because I hold you in my heart."* (Phil 1:3,7)



# *Creating Hope: Changing Lives*

## **A 5th Grader Finds His Way**

For students at St. Charles School, hope and change can come from many different places. That was the case for fifth grader Josiah, who started to thrive through a unique connection with a certain “Angel.”

This Angel is a South American red-footed tortoise who lives in Josiah’s classroom at St. Charles. While Kate Kelley teaches Josiah his math, english and geography, Angel plays a complementary role in immersive learning, transforming academic lessons into hands-on and therapeutic experiences that are critical to someone like Josiah.

Josiah came to St. Charles a few years ago, withdrawn and disengaged from the people and places around him. He coped with uncomfortable and difficult situations by turning inward, not outward like most peers his age.

But that soon began to change, especially when Kelley’s class “adopted” Angel. Today, the bond between the tortoise and Josiah is remarkable. Josiah can’t wait to get into the classroom to see his special friend. “His face always lights up, every single morning,” said Kelley.

When he sits down in the morning to take on the day’s coursework, Angel is on the

table beside him. His presence keeps Josiah and other students calm and focused. If they complete their coursework, they can feed Angel his favorite food: strawberries. It’s positive reinforcement that works.

It’s a two-way street. Angel has lived most of his life in captivity and is rebuilding his natural abilities. Josiah helps him learn how to track – a vital skill in the wild – using strawberries to lead him across the floor. It’s engaging for students who have struggled with the demands of sitting still to learn.

“Angel teaches the students responsibility and compassion when they otherwise wouldn’t grasp these concepts,” adds Kelley.

“Angel has truly transformed Josiah,” Sister Mary Agnes Dombroski, executive director of St. Charles School says. “He’s more engaged with his classmates, teachers and the environment around him. Angel is not just an animal; he’s an invaluable source of security and healing for our students.”

St. Charles has provided hope for Josiah. And Angel has truly changed his life.

# *Creating Hope: Changing Lives* **One Picture at a Time**

Joe Bohunicky woke up one day with a vision – a vision that would be shared by hundreds of residents and family members across Catholic Charities New Hampshire’s skilled nursing facilities. It’s a vision that continues to bring joy, hope and happiness to many lives.

Walk into Mt. Carmel Rehabilitation and Nursing Center in Manchester, where Bohunicky is the administrator, and it should take only a few seconds to see. On the wall, there’s a photo of newlyweds as they cut their wedding cake, one of a beautiful young high school student and another of sisters enjoying a precious summer moment.

You’ll soon learn these are photos of residents. They cover the walls of most hallways and speak to years of cherished memories, stories and time with loved ones.

For Bohunicky, this isn’t just a nursing facility.

“It’s their home,” he says. “One of the first things you see in your own home is photos. We want to emulate that feeling as best we can.”

Residents find themselves in the photos and laugh and say ‘that’s me!’, and then other residents will ask them who is in the picture with them. It’s inspiring to see the connections that have been formed through this all.

Bohunicky has been with Catholic Charities Healthcare Services for more than thirteen

years, and the idea for the family photos stemmed from his time at St. Teresa Rehabilitation and Nursing Center about ten years ago.

Joe spent more than six months curating the photos, having them resized and copied, and finding just the right matching frames and corresponding sayings for the walls.

The family photos have become so much more than Joe could have ever imagined.

“When touring our facilities, it’s one of the first things families and prospective residents notice,” Joe says, joy evident in his expression.

This vision has turned into a treasured part of living at Mt. Carmel, and that is never more evident than in the story of a man whose wife was a resident of Mt. Carmel’s memory care unit. Joe asked the man for a photo from their wedding, had the photo enlarged and framed and placed it on the wall outside the wife’s door. When the husband saw it for the first time, he started crying.

“He couldn’t believe we would do something like that for him,” Joe recalls.

But for Joe and Catholic Charities New Hampshire, the idea was obvious.

“The resident always comes first. Everything else is secondary.”



FAMILY IS A GIFT  
THAT LASTS FOREVER







# *Creating Hope: Changing Lives* **Forging a Better Future for Her Family**

Kalila is a single mother putting in tireless hours at a manufacturing equipment company in Atkinson to help make ends meet.

Every summer, Tanya, her sweet, smart nine-year-old daughter, has one simple request: to attend summer camp.

“Despite having a steady income, gathering an extra \$1,500 was close to impossible. But I didn’t want to let my daughter down,” Kalila recalls.

Things got more complex when Kalila fell behind on her property taxes.

“It was so bad that it got to a point where I was afraid to check the mail,” she says.

It was at a local food pantry in Plaistow in 2016 when Kalila first heard about Catholic Charities New Hampshire. She started with financial fitness classes, a program that wouldn’t happen without the support of our generous donors. Kalila’s class was taught by Judy Nelson, a parish outreach coordinator at Catholic Charities’ district office in Salem.

“They teach you the basics, which if you know anything about financial fitness, there’s little basic about it,” she says about her time spent in class. “There’s a lot to learn, but it’s knowledge that’s essential for someone like me to move my life forward.”

The financial fitness classes were only one part of a Life Plan, a set of strategic short- and long-term goals Catholic Charities New Hampshire creates with clients to address the root causes of one’s challenges and identify ways to successfully overcome them. With Judy’s support and the guidance of a new budget, Kalila was able to negotiate a payment plan with the town for her taxes. If everything goes according to plan, she’ll be out of debt by the end of this year.

“It’s so liberating,” Kalila exclaims.

“She’s incredibly self-motivated,” Judy says of Kalila. “Once she understands what she needs to do, she will go out and do it. What inspires me the most is how she’s taken what she’s learned to heart and is eager and enthusiastic in working toward her goals.” And it’s all thanks to donors.

Now Kalila can save a year ahead of time to send her daughter to summer camp, but her daughter will be doing much more than going to camp.

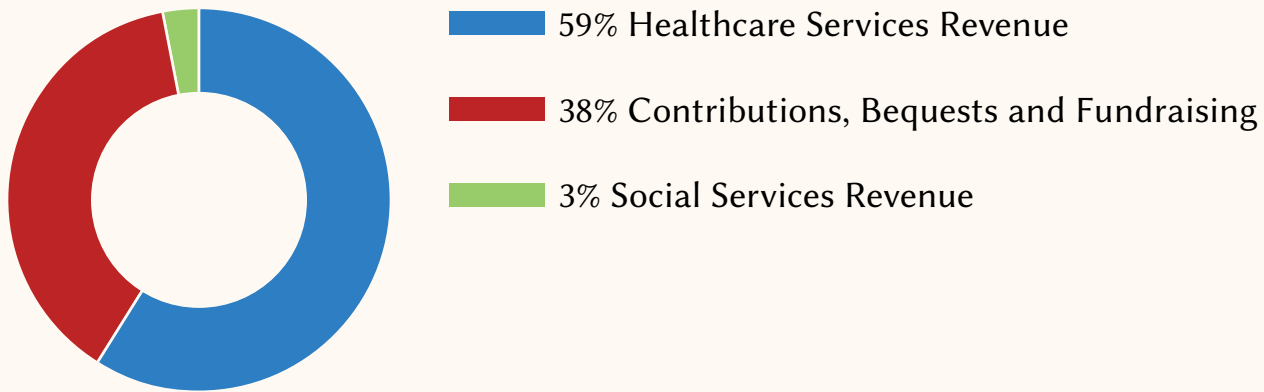
“We’re going on a lot more trips,” Kalila says, the smile evident in her voice. “It’s something I used to do, and now, thanks to Catholic Charities and the amazing donors who support them, I can share the joy of traveling with my daughter.”

# Financial Snapshot

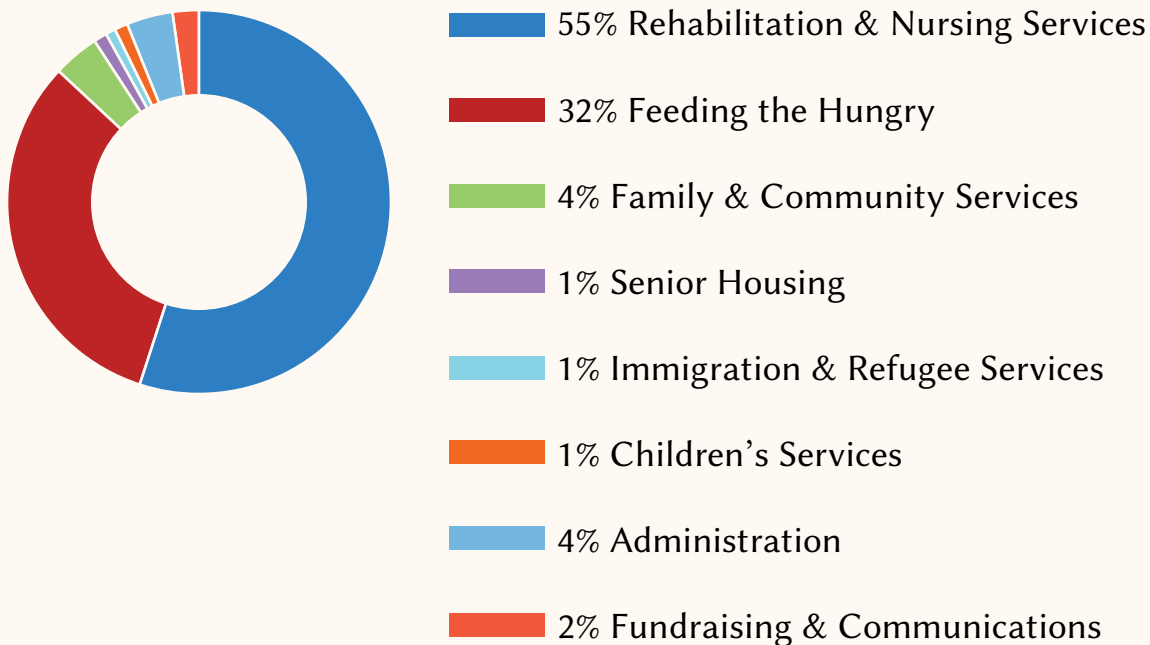
April 1, 2017 - March 31, 2018 (Audited - in thousands)

	<b>HEALTHCARE</b>		<b>SOCIAL SVCS.</b>	
	<b>2018</b>	<b>2017</b>	<b>2018</b>	<b>2017</b>
<b>ASSETS - UNRESTRICTED</b>				
Cash, Accounts Receivable and Other Assets	23,523	28,053	3,630	4,185
Property and Equipment - Net	18,614	17,343	9,017	9,276
Investments	19,428	17,538	14,676	13,031
<b>Total Unrestricted Assets</b>	<b>61,564</b>	<b>62,933</b>	<b>27,323</b>	<b>26,492</b>
<b>LIABILITIES AND NET ASSETS</b>				
Accounts Payable, Accrued Expenses and Other Liabilities	5,828	7,859	2,320	2,223
Mortgage Bond Payable	13,343	14,139	449	621
Net Assets - Unrestricted	42,393	40,935	24,554	23,648
<b>Total Liabilities and Unrestricted Net Assets</b>	<b>61,564</b>	<b>62,933</b>	<b>27,323</b>	<b>26,492</b>
<b>UNRESTRICTED REVENUE AND EXPENSES (Excluding in-kind)</b>				
Net Patient Services and Other Program Revenue	48,708	47,809	1,752	2,082
Recurring Contributions from Trusts	-	-	422	395
Contributions and Other Fundraising	114	72	9,498	9,435
<b>Total Unrestricted Revenue from Operations</b>	<b>48,822</b>	<b>47,881</b>	<b>11,673</b>	<b>11,912</b>
Salaries and Benefits	26,060	26,850	9,406	9,258
Rent, Occupancy Costs and Insurance	2,943	2,887	1,203	1,206
All Other Expenses	18,800	18,354	2,052	2,023
<b>Total Operating Expenses</b>	<b>47,804</b>	<b>48,091</b>	<b>12,661</b>	<b>12,487</b>
<b>Change in Net Assets before Extraordinary &amp; Non-Operating Revenue and Depreciation</b>	<b>1,017</b>	<b>(211)</b>	<b>(988)</b>	<b>(575)</b>
<b>Extraordinary Revenue</b>				
Bequests	-	-	497	380
<b>Non-Operating Revenue</b>				
Investment Income - Net	2,072	2,031	1,660	1,522
<b>Depreciation</b>				
In-kind Contributions	7	7	21,091	19,631
In-kind Expenses	(8)	(7)	(20,538)	(19,145)
<b>Change in Unrestricted Net Assets</b>	<b>1,458</b>	<b>281</b>	<b>906</b>	<b>1,061</b>

## FY2018 Sources of Funds



## FY2018 Uses of Funds



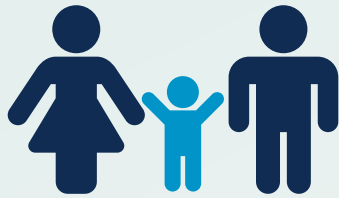
**CCNH provided the equivalent of \$15,420,299 in free or reduced-cost services in FY2018. Our financial information, audited by Baker, Newman & Noyes, LLC, is available at our Administrative Office in Manchester.**

Catholic Charities gratefully acknowledges the legacies and support of those who assist in the continuation of our ministry.

For information about planned giving or other forms of donations to Catholic Charities, please contact the Development Department at 603.669.3030.

# Because of You: FY 2018 Program Activity & Impact

## Parish & Community Services



Provided support to **2,128** clients (**4,548** total household members) challenged with hunger, insecure housing, poverty and a lack of basic necessities.

## Financial Fitness

Clients in our financial fitness program are improving their economic situations:

**21** have created and been using a budget for at least 3 months.

**51** created a monthly cash flow calendar.

**35** reduced their grocery bill by an average of \$195.

**17** pursued additional education or job training.

**8** reduced their total debt load by an average of \$2,421.



## Counseling Services

**2,681** sessions to **417** individuals facing a wide range of life challenges.

**\$173,811** in charitable care for clients who cannot access critical mental health services.

## Adoption & Maternity Services

Provided **32** new intakes around post-adoption (search & reunion) services – a **14%** increase over FY 2017.



## Immigration Legal Services

Provided legal assistance to **247** clients.



From **41** different counties.

## Our Place

Our Place clearly improves mothers' readiness for birth and parenthood:

- **73%** had improvement in pregnancy education.
- **97%** improved their parenting knowledge.
- **88%** of clients improved their parenting skills.
- Clients showed a **34%** improvement in overall life situations (based on average Life Plan score).



**123** moms, parents and families served.



## RECIPE FOR SUCCESS COOKING MATTERS®

During a recent Cooking Matters® for Kids class, the staff noticed that one of the little girls about 8-9 years old was not as engaged as in previous classes. Something wasn't right, so one of the instructors took little Olivia aside and asked her if she was feeling okay. That's when the little girl told our staff that she was very hungry, there was no food in her house and she didn't feel well. After the staff gave her a banana she felt much better and was able to rejoin the other kids in the class. After the class was over, the staff also discretely gave her extra food to take home.

Sadly, this is not an unusual situation for our staff and volunteers to encounter.

- Cooking Matters®, Program of NHFB

*The NH Food Bank hosts Share Our Strength's Cooking Matters® program in NH.*

*Cooking Matters® empowers low-income families to stretch their food budgets so their children get healthy meals at home. Participants learn to shop smarter, use nutrition information to make healthier choices, and cook delicious, affordable meals.*

*Cooking Matters® courses and tours equip families with the skills they need to stretch their food dollars and maximize the benefits.*



# Financial Snapshot

Fiscal Year Ended March 31, 2018

## Support & Revenue

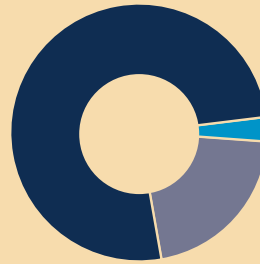
Food in-kind .....	\$ 21,026,000
Program Fees .....	\$ 507,000
Grants, Contracts & Contributions ..	\$ 5,504,000
Total Support & Revenue .....	\$ 27,037,000

## Expenses

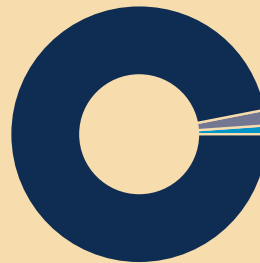
Program .....	\$26,134,000
Management & General .....	\$ 180,000
Fundraising .....	\$ 581,000
Total Expenses .....	\$ 26,895,000
Change in Net Assets .....	\$ 142,000
Total Net Unrestricted Assets .....	\$ 2,724,000

*We receive NO state or federal funding for food distribution.*

## Support & Revenue



## Expenses



## 2018 Goals

- Increase delivery and distribution of food to high need areas throughout the state.
- Offer professional development aimed at sustaining our agency partners.
- Campaign for more screening and referrals for the vital signs of hunger with healthcare providers.
- Establish preventative food pantries in partnership with NH hospitals and other healthcare settings.
- Launch the Junior Ambassador program in Manchester high schools.
- Partner with more schools for in-school pantries to meet student need.
- Partner with more senior programs to reach more food insecure seniors.

## Advisory Committee

### John Dumais

*NH Grocers Association,  
Chair*

### Thomas Blonski

*Catholic Charities NH*

### J. Christopher Currie

*Nathan Wechsler &  
Company*

### Lisa Drake

*Stonyfield*

### Todd C. Fahey

*AARP New Hampshire*

### Ed Gallagher

*Comcast*

### Robert Gossett

*Gossett Consulting*

### Chris Grenier

*Citizens Bank*

### Pauline A. Ikawa

*TD Bank*

### Eileen Groll Liponis

*NH Food Bank*

### Michael C. McLean

*McLane Middleton*

### Nancy Mellitt

*NH Food Bank*

### Carl Provencher

*Hannaford*

### Dominique Rust

*Catholic Charities NH*

### Patricia R. Shuster

*Saint Anselm College*

### Abby Tucker

*Wadleigh, Starr & Peters*

### Joanne Ward

*Former NH House  
of Representatives,  
Rockingham County,  
District 19*

### Bruce Wilson

*NH Food Bank*

### Michael Wirtanen

*Shaw's*



# 13,665,147

Pounds of food distributed to those in need in NH in 2017.



# 11,556,057

Total Meals



## Cooking Matters® NH



**670** signature *Cooking Matters®* course participants in 2017.\*

*\*Thanks to our partnership with UNH Cooperative Extension, classes are available in all 10 counties.*

**387** *Cooking Matters® at the Store* participants.



Nationally, **71%** of adult course graduates are eating more vegetables and **67%** of teen course graduates are eating more fruit.

## Culinary Job Training Program



**21** individuals graduated from the culinary training program in 2017.

**128,375** meals prepared and distributed to partner agencies in 2017.

## SNAP

*(Supplemental Nutrition Assistance Program)*

**\$171,056**

Local economic impact

**\$95,962**

Benefits

**126** Applications



**TOGETHER WE CAN SOLVE HUNGER.™**

# \$ 488,040

Volunteer Dollar Value



# 19,600

Volunteer Hours in 2017

## The New Hampshire Food Bank Services

More than **425** partner agencies across the state.

Approximately **50%** of food distributed by partner agencies is from the NHFB.



# Foundation & Corporate Giving

## \$1,000+ gifts received April 1, 2017 to March 31, 2018

Absolute Title LLC  
A-D Archambault Plumbing & Heating, Inc.  
Admix, Inc.  
Aetna Foundation, Inc.  
Aetna, Inc.  
Albertsons  
Alexander Eastman Foundation  
Alice J. Reen Charitable Trust  
The Allen Foundation  
American Legion Post #7  
AmeriHealth Caritas  
Ameriprise Financial  
Anagnost Companies  
Ancient Order of Hibernians - Nashua  
Division  
Androscoggin Valley Hospital  
Anheuser-Busch, Inc.  
Anthem Blue Cross and Blue Shield  
Anthem, Inc.  
Anonymous  
Apple Wood Construction, Inc.  
The Archibald Foundation, Inc.  
ARMSRx LLC  
ART Payroll  
ASK Land Title Services, LLC  
Associated Grocers of New England, Inc.  
Atkinson Congregational Church  
BAE Systems  
Baker Newman Noyes, LLC  
Bank of America  
Bank of America Charitable Foundation  
The Barker Foundation, Inc.  
Baron's Major Brands, LLC  
The Baupost Group, LLC  
Bedford Ambulatory Surgical Center, LLC  
Ben Davine Memorial Golf Tournament  
Benefit Strategies, LLC  
Benjamin Couch Trust  
Berkshire Hathaway Verani Realty  
BJ's Charitable Foundation  
Blanche M. Walsh Charity Trust  
Bob's Discount Furniture  
Boston Medical Center Healthnet Plan  
Bow Mills United Methodist Church  
Brady Sullivan Properties, LLC  
Brew Free or Die  
Bright Funds Foundation  
British Cars of New Hampshire  
Brookstone Builders, Inc.  
C&S Wholesale Grocers, Inc.  
Carey Builders, Inc.  
Carolyn H. Benthien Associates, LLC  
Castagna Consulting Group, LLC  
Catholic Medical Center  
Central Paper Products Company  
CGI Business Solutions  
Charles P. Blouin Inc.  
Charter Charitable Foundation  
Chroma Technology Corporation

Churchill Downs  
CIGNA  
Cigna Foundation  
Cirtronics Corporation  
Citizens Bank  
Citizens Charitable Foundation  
Citizens Private Bank and Trust  
Claremont Savings Bank Foundation  
Clark Insurance  
The CMH Foundation  
Cogswell Benevolent Trust  
Combined Federal Campaign  
Combined Federal Campaign of Northern  
New England (0571)  
Comcast Northern Division Office  
The Common Man Restaurant  
Community Foundation of New Jersey  
Compass Group  
Concord Direct  
Concord Ophthalmologic Associates, PA  
Co-operative Insurance Companies  
Core Medical Group  
The Country Mile LLC  
Crowley Family Foundation, Inc.  
The Daniels Foundation  
Dartmouth-Hitchcock Manchester  
Daughters of Isabella St Anthony Circle 1374  
Davignon Club Inc.  
DB Adfund Administrator LLC  
Dead River Company  
Delhaize America Shared Services Group, LLC  
DeMoulas Super Markets, Inc  
Devine, Millimet & Branch, PA  
Digital Federal Credit Union  
The Dobles Foundation  
The Doe Family Foundation  
Donahue Tucker & Ciandella PLLC  
Donna Anne Poulack Foundation  
Dorothy Gould Cook Memorial Fund  
Dulude Family Foundation  
Dynamic Network Services  
E & J Gallo Winery  
Eastern Bank  
Eastern Bank Charitable Foundation  
Edgewood Manor  
Electrical Installations Inc  
Elektrisola Inc.  
Emma M. Kelly Charitable Trust  
Enterprise Holdings Foundation  
Evelyn H. Chase Trust  
Eversource Energy Foundation  
Exeter Area General Federation of  
Women's Clubs  
ExxonMobil Foundation, Inc.  
Fallons Furniture  
Farley White Management Co.  
Feeding America  
Feller Family Charitable Foundation  
Ferrotec (USA) Corporation

Fidelity Investments  
First American Title Insurance Company  
First Baptist Church  
First Congregational Church  
Forever Metal Roof Company  
The Frank E. Kaley Foundation  
Frederick Smyth Institute of Music  
Friends & Neighbors Thrift Store  
Friends of St. Vincent de Paul  
Fulcrum Associates  
The Fuller Foundation, Inc.  
General Electric Foundation  
Genesis HealthCare Corporation  
Gertrude Couch Charitable Trust  
Gilford Community Church  
Globe Manufacturing Company  
God's Grace Fund  
Goldfinch Financial  
Goodwill Industries of Northern New England  
Goulder Family Foundation  
Grand Chapter NH Order of Eastern Star  
Granite Properties of New England LLC  
Granite United Way  
The Grant Charitable Trust  
Great Bay Corvette Club LTD  
Great-West Life & Annuity Insurance  
Company  
The Greater Boston Food Bank  
Gretchens Kids Inc.  
Group 1 Automotive  
Guardian  
The Guardian Life Ins. Co.  
The Hanson Charitable Fund  
The Harbor Group, Inc.  
Harpoon Brewery  
The Hartford  
Harvard Pilgrim Healthcare Inc.  
Harvey Construction Corporation  
Harvey D. & Christina R. Hill Charitable Trust  
HCC Life Insurance Company  
Health Plans, A Harvard Pilgrim Co.  
Heritage Plumbing & Heating, Inc.  
HM Life Insurance Company  
Holy Trinity Parish  
The Horne Family Foundation  
Howe, Riley & Howe, PLLC  
HP Employee Charitable Giving Program  
Hubbell, Inc.  
Hypertherm, Inc.  
I.C. Reed & Sons, Inc.  
IBM Employee Services Center  
Immaculate Conception Parish  
The Immaculate Conception Tithing  
Committee  
Immanuel Evangelical Lutheran Church  
The Jack and Dorothy Byrne Foundation  
JDH Manufacturer's Representatives, LLC  
Jen-Scot Realty, Inc.  
Jewell Lodge #94 F&AM



John Snow Inc.  
 JRL Studio  
 Kalwall Corp.  
 The Kendal C. and Anna Ham Foundation  
 Kentco North, Inc DBA Midas Auto  
 Service & Tires  
 Knights of Columbus Council 12988  
 Knights of Columbus Council 4442  
 Kramer Family Foundation  
 Lane & Elizabeth C. Dwinell Foundation  
 Lavallee Brensinger Architects  
 Lincoln Financial Foundation  
 Lisa Libraries  
 Littleton Regional Healthcare  
 Lockridge Animal Hospital  
 Longview Farm  
 The Madelaine G. von Weber Trust  
 Mark Carrier Construction, Inc.  
 Market Square Jewelers  
 Martignetti Companies  
 Martin I. & Pauline G. Elkin Charitable Trust  
 The Marvin A. & Ben Brustin Charitable  
 Foundation  
 McKesson Medical-Surgical  
 Medtronic YourCause LLC Volunteer  
 Grant Program  
 MegaFood  
 The Melanson Company, Inc.  
 Memory Makers of NH OES  
 Meredith Village Savings Bank  
 Merrimack County Savings Bank  
 Metro Walls, Inc.  
 MicroDAQ.COM, Ltd.  
 Milestone Engineering & Construction, Inc.  
 The Millipore Foundation  
 Morin Contracting Services, Inc.  
 Murphy Giving Fund  
 Mutual of America Foundation  
 New England Private Wealth  
 New Hampshire Electric Cooperative  
 Foundation, Inc.  
 New Hampshire Employers Insurance  
 Company  
 New Hampshire Healthy Families  
 New Hampshire Housing Finance Authority  
 New Hampshire Public Radio  
 Newman's Own Foundation  
 NH Bar Foundation's Hon. William F.  
 Batchelder Fund  
 NH Circle of Home & Family Inc  
 NH Department of Justice  
 NH Public Health Association  
 NH State Association of Emblem Clubs  
 NH State Council Knights of Columbus  
 NH State Liquor Commission  
 NH Triple Play LLC  
 NHASBO  
 The Normand A. Ramsey Family Foundation  
 Northeast Delta Dental  
 Northminster Community Church  
 Northwood Diner LLC  
 Norwin S. & Elizabeth N. Bean Foundation  
 Oleonda Jameson Trust  
 Omni Mt. Washington Hotel  
 Orr & Reno, P.A.

The Penates Foundation  
 People's United Community Foundation  
 Pharmaceutical Research &  
 Manufacturers of America (PHRMA)  
 PharMerica Corporation  
 Pichette Bros. Construction, Inc.  
 Pleasant View Center  
 Precision Letter Corporation  
 Price Chopper's Golub Foundation  
 Primmer Piper Eggleston & Cramer PC  
 QBE  
 Queen City Rotary Club  
 Quirk Chevrolet Buick Hummer  
 Ray and Kay Eckstein Charitable Trust  
 RBC Foundation - USA  
 RBC Wealth Management  
 Red Arrow 24 Hour Diner LLC  
 Red Arrow Diner Concord, LLC  
 Red Arrow Diner LLC  
 Red Arrow Diner Londonderry LLC  
 Residential Mortgage Services Inc  
 Revolution Church Food Pantry  
 Ridgewood Savings Bank  
 RiverStone Resources, LLC  
 Rockingham Turf Care  
 Rogers Family Foundation  
 Roman Catholic Bishop of Manchester  
 The Rona Jaffe Foundation  
 Ronald McDonald House Charities of Maine  
 Rotary Club of Bedford  
 Rothwangl Dental Care, PLLC  
 The Rowley Agency  
 RTM Manufacturing LLC  
 RxBenefits, Inc.  
 Safeway Foundation  
 Saint Anselm College  
 Salem Co-Operative Bank  
 The Samuel P. Pardoe Foundation  
 Saul O. Sidore Memorial Foundation  
 Seaboard International Forest Products, LLC  
 Service Credit Union  
 Share our Strength  
 Sheehan Phinney Bass + Green PA  
 Shop Rite - Wakefield Food Corporation  
 ShopRite Partners in Caring  
 SJG Engineering LLC  
 The Society of the Sisters of Charity  
 Sojourn Partners  
 South Dakota Beef Industry Counsel  
 Speedway Children's Charities  
 St. John Neumann Parish  
 St. Mary's Bank  
 St. Matthew Parish  
 St. Peter Parish  
 St. Pius X Parish  
 St. Vincent De Paul Society - St. Joseph Parish  
 Standard Insurance Company  
 State Farm Good Neighbor Grant Program  
 State of New Hampshire Department of  
 Safety  
 State of NH Dept. of Administrative  
 Services Bureau of Purchases  
 Stefano La Sala Foundation, Inc.  
 Steiner Buying Services Inc.  
 Stifel Nicolaus

Sullivan Construction, Inc.  
 Sun Life Financial  
 Symetra  
 Tasker Funeral Home  
 TD Charitable Foundation  
 Team Engineering  
 Three Maples Renaissance Corp  
 The Timberland Company  
 Trends Marketing Group, LLC  
 Tufts Associated Health Plan, Inc.  
 Turbocam Automated Production Systems, Inc.  
 Turnstone Corporation  
 United Church of Jaffrey  
 United Way of Massachusetts Bay and  
 Merrimack Valley  
 United Way of Rhode Island  
 UnitedHealth Group  
 Unitol Service Corporation  
 University System of New Hampshire  
 Unum Matching Gifts Program  
 Upper Connecticut Valley Hospital  
 USI Insurance Services LLC  
 Verbout-O'Brien Charitable Foundation  
 Vermont Mutual Charitable Giving Fund  
 VetroFuse, Inc.  
 Walmart #1796  
 Walmart #2246  
 Walmart #6030  
 Walmart Foundation  
 Weeks Medical Center  
 Weyerhaeuser Giving Fund  
 WHEB  
 Workplace Benefit Solutions  
 Zock Endowment Trust

#### Feeding America

- Albertsons Companies Foundation  
& The Entertainment Industry  
Foundation
- Darden
- Morgan Stanley Foundation
- Nationwide Foundation
- Red Nose Day Fund

#### New Hampshire Charitable Foundation

- David P. & Dorothy M. Goodwin  
Family Fund
- Lois G. Roy Dickerman Fund

Please accept our sincere apologies for any mistakes or omissions. Contact our Development Department to report any discrepancies. Thank you.

## Memorial Recognitions

Paul Allaire  
Walter Anderson  
Andrea J. Austin  
Roger Lee Baker  
Helen Bananiak  
Gloria Barton  
John & Sophie Beserdetsky, Sr.  
Lois Boston  
Jeannine Leone Bouchard  
Brian E. Bourke  
Cliff Boyce  
Janice Brady  
Said Brahim  
Rev. Thomas Bresnahan  
Ernest R. Briand  
Joan Brosaban  
Tony Brucato  
Deidra Mae Burke  
Rev. & Mrs. William Buttrick  
Julie Cabral  
Mary Elizabeth Cahill  
Jean Cardinal  
Eugene J. Carlin  
Louis G. Chabot  
Elise Cirrone  
Anne LaMontagne Cobb  
Roger Collins  
James A. Connor  
Corey  
Carol Costa  
Cecile D. Cote  
Marie Lou Coulombe  
Joseph Croteau  
Brian R. Curley  
Edna Cyr  
The Dahuty Families  
Lois Daneau  
Charlotte Davenport  
Danny Delbianco  
Sandra Descoteaux  
Ernestine Desmarais  
Norman Desrochers  
Marianne Dionne  
Joseph Donate  
Kathryn Donati  
Delbert Downing  
Miriam E. Downs  
Susan Drelick  
Kevin B. Driscoll  
Anne M. Duffy  
Dick Dupont  
Hunnah Durette  
Mary Ann Dwyer  
Albert Dwyer  
Edward Dziergowski  
Helena Dziura  
James & Patricia Eckert  
Patricia Eckert  
Edward & Angelina Fanelli  
Roland Faucher  
Kirk Andrew Florian  
Paulette & Bill Foley  
Neri Fougere

Grace Gagne  
Jane Gariepy  
Barbara Garland  
Theresa Scheurring Gennett  
Virginia Gleason  
John F. Goodrich  
Cecile Goudreau  
Raymond Grenier  
Phyllis Grunert  
Dr. Andre T. Guay  
Raymond N. Guillemette  
Mark G. Gulezian  
Diane Gustafson  
The Gustafson Family  
Ann Haggart  
William T. Halloran  
Kassie Hamel  
Philip & Ardis Hatfield  
Donna LaMontagne Haynes  
George Hickey  
Frank & Mildred Holmes  
Beata R. Hoodlet  
Hope  
David T. Howe  
Charles A. Hurray  
Thomas Hyde  
Fr. Patrick F. Irwin  
Ronald Jean-Louis  
James Keery  
Helen Kingsley,  
Maurice, Pauline, & Susan Lacroix  
George E. Lagasse  
Mabelle Provencher LaMontagne  
Norma Lang  
Lorraine Mary LaPlaca  
Richard, Robert & William Laquerre  
Leona Larson  
Las Vegas Massacre Victims  
Irene St. Laurent  
Julianne Lavoie  
Roger Lawrence  
Andrew K. Lewis  
Mary Ann Limric  
Edward T. Liston  
Richard Lizotte  
Harold Lloyd  
Arthur J. Lopes  
Renee Lorenz  
Margaret "Margie" Mary Lyons  
Claire MacDonald  
Leon W. Mack  
The Mallick Family  
Patricia A. Maloney  
Joseph & Mary Mandile  
Jamie Marier  
Connie Marrion  
The Martineau Family  
John Marzilli  
Lucille M. Masse  
Gertrude "Trudy" E. Matott  
A. McAllister  
Patricia McKeen  
Eric Merrill  
Bill Moeckel  
Mom

Anita Monnelly  
Rita Monnelly  
Winifred M. Morenz  
Lorraine Rita Morrisette  
Stephanie Moskal  
Elva Muzzey  
Maurice Nepveu  
William E. O'Brien  
The O'Connor Family  
Deborah O'Loughlin  
Bishop Leo O'Neil  
Armand R. Paquette  
Robert Pariseau  
Douglas J. Pauly  
Charles Pelchat  
Judith Pfeifer  
Jeffrey Allen Poissant  
Anne Elizabeth Provost  
M. Quinn  
Ralph  
Paul J. Raymond  
Marlene Ricard  
Patricia Rogers  
James S. Roy  
Timothy Sabol  
Daniel Santos  
Bill Savini  
Ella A. Sawyer  
Fr. Dan Sinabaldi  
Anne. C. Sivik  
Mette Skillings  
Dr. Alexander C. Smith  
Patricia A. Sovich  
Gretchen Stephan  
Joseph D. Thomas  
Donald J. Turgeon  
Michael A. Uvina  
Cheryl A. Vallee  
Joanne Ellen Wedge  
Frederick & Isabelle Wendelken  
Richard R. Weyrick  
Paul "Bo" Wojcik  
Jack Zito  
Daniel Zocchi

Please accept our sincere apologies for any mistakes or omissions. Contact our Development Department to report any discrepancies. Thank you.

## Board of Trustees

Most Rev. Peter A. Libasci  
Chairman - Diocese of Manchester

Todd C. Fahey  
Vice Chairman - Bow

Edward Dudley  
Treasurer - Nashua

Sister Paula Marie Buley  
Nashua

Robert Gossett  
Seabrook

Rev. Agapit Jean  
Dover

Very Rev. Jason Jalbert  
Vicar General - Diocese of Manchester

Joseph Raczka  
Deputy Vice Chair - Bedford

Anu R. Mullikin  
Secretary - Auburn

James Coughlin  
Hanover

Brian P. Grip  
Nashua

Russ Ouellette  
Bedford

Patricia R. Shuster  
Fitzwilliam

Very Rev. Shawn Therrien  
Vicar General - Diocese of Manchester

Thomas E. Blonski  
President & CEO - Brentwood

Kevin F. Barrett  
Holderness

Michael J. Gilbert  
Concord

Dn. Rick Hilton  
Wolfeboro

Maria Ryan  
Manchester

## Executive Staff

Thomas E. Blonski, MBA  
President & CEO

Dominique A. Rust  
Vice President & COO

David Hildenbrand  
CFO

Michael D. Lehrman, MHA  
Vice President of Healthcare Services

David S. Twitchell, SHRM-SCP, CCP, CBP  
Vice President of Human Resources

## Directors

Cathy Chesley, J.D., Ed.D.  
Director of Immigration and Refugee Services

Marc S. Cousineau  
Director of Parish & Community Services

Robert J. Germain  
Director of Technology

Rosemary Hendrickx  
Director of Development Operations

Steven J. Knight, MBA, MA  
Assistant Vice President, Program & Mission Integrity

Eileen Groll Liponis  
Executive Director, New Hampshire Food Bank

Rev. John J. Mahoney, Jr., M.Div., J.C.L., LCMHC  
Director of Clinical Services

Brian May, MSA, MBA  
Director of Accounting

Michael McDonough  
Executive Director, Marketing and Communications

Karen Moynihan  
Interim Senior Director of Development

Michal Waterman  
Director of Human Resources

## Healthcare Services

Michael Takesian  
Assistant Vice President, Healthcare Services

Sheila Meeker, RN  
Director of Clinical Reimbursement

Darlene Underhill, RN  
Director of Clinical Services

Joe Bohunicky, NHA, MBA  
Mt. Carmel Rehabilitation and Nursing Center

Brenda Buttrick, RNC, LNHA  
St. Francis Rehabilitation and Nursing Center

Jeffrey Lacroix  
St. Vincent de Paul Rehabilitation and Nursing Center

Marlene Makowski, LNHA, MBA  
St. Joseph Residence & Bishop Peterson Residence

Bret Pomeroy, NHA  
Warde Rehabilitation and Nursing Center

Luanne Rogers, NHA  
St. Teresa Rehabilitation and Nursing Center

Scott E. Stone, NHA  
St. Ann Rehabilitation and Nursing Center

Barbara J. Wilkins, LNHA, MHA  
Good Shepherd Rehabilitation and Nursing Center

*Thank You*  
*For*

**MOVING**  
**LIVES**  
**FORWARD**



[cc-nh.org](http://cc-nh.org)

